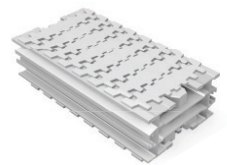
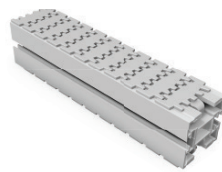


# SLAT CHAIN CONVEYING SOLUTIONS

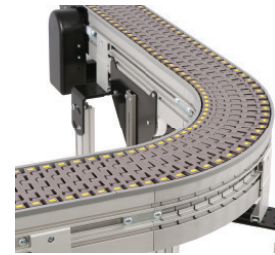
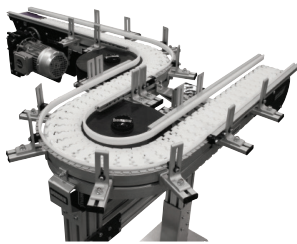


- > Complex Configurations & Tight Spaces
- > High Speed Performance -Up to 76mpm
- > Reduces Conveyor Footprint
- > Ideal for Curves, Inclines & Declines

# Product Summary

## Conveyors are best for:

- > Part Handling
- > Transfers
- > Tight Spaces
- > Elevation Changes
- > Accumulation
- > Buffering
- > Complex Configuration
- > Long Lengths
- > Cooling & Curing
- > Curves, Jogs, Incline, Decline
- > Side Grip & Wedge



## SOLUTIONS

### Sizes & Measurements

- > 45 mm, 65 mm, 85 mm, 105 mm, 150 mm, 180 mm & 260 mm widths,
- > 0.6 m to 29.8 m lengths

### Loads & Speeds

- > Up to 272 kgs
- > Up to 76 meters per minute

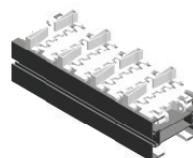
### Plastic Chain Types

Standard: Low Friction & Friction Top Inserts Specialty

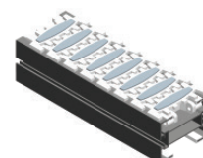
- > Conductive
- > Cleated
- > Roller Top
- > Magnet Top
- > And Many More



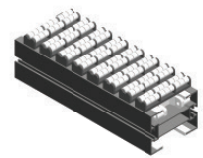
Flat



Cleated

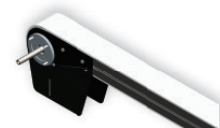


Friction Top



Roller Top

### Modules



Drive



Idler



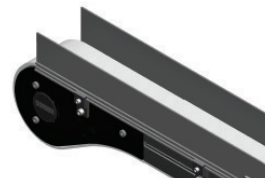
Curve  
from 15° to 180°



Incline/Decline  
from 5° to 90°

### Guiding

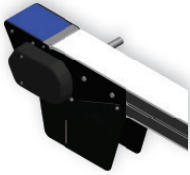
- > Fixed Guide
- > Fully Adjustable Single Rail
- > Adjustable Double Rail
- > And Many More



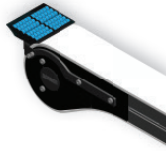


## Transfers

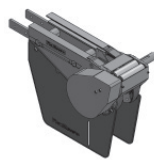
- > Industry-Best Transfers
- > Powered or Roller
- > Multiple Mounting Options



Outfeed / Infeed  
Power Transfer



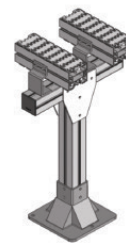
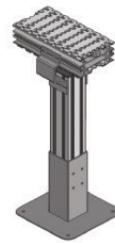
Infeed / Outfeed  
Roller Transfer



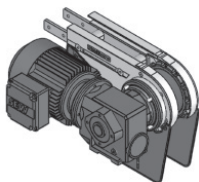
Infeed / Outfeed  
Transfer Bridge

## Support Stands

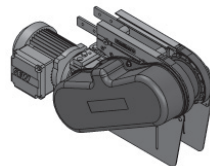
- > Single, Double and Multi Lane Structures
- > Horizontal, Vertical and Angled Mounting Brackets
- > Drive End Supports



## Drives



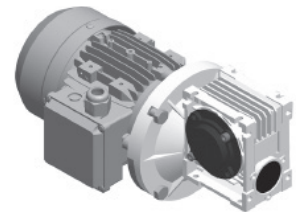
Direct Drive



Suspended Drives

## Gearmotors

- > Standard Load & Heavy Load Options



# CONFIGURATIONS

## Standard Conveyors

- > The modular design of our conveyors along with the building blocks of drive, corner, vertical bend, etc. provide unlimited possibilities for conveyor configurations and applications.

## Alpine Conveyors

- > Ideal for inclines and declines in tight spaces
- > Provides capability for vertical incline with minimal floor space
- > Applications include accumulating, buffering and cooling product between processes or machines
- > Serves as an in-line accumulator with entry and exit at different levels or an in-line or off-line accumulator with entry and exit at the same level



## Wedge Elevators

- > Specialty chain designed to securely convey a product by gripping the sides
- > Saves footprint space by vertically lifting or lowering a product
- > Built with aluminum and stainless steel to meet the stringent hygiene standards required for medical and cosmetic packaging

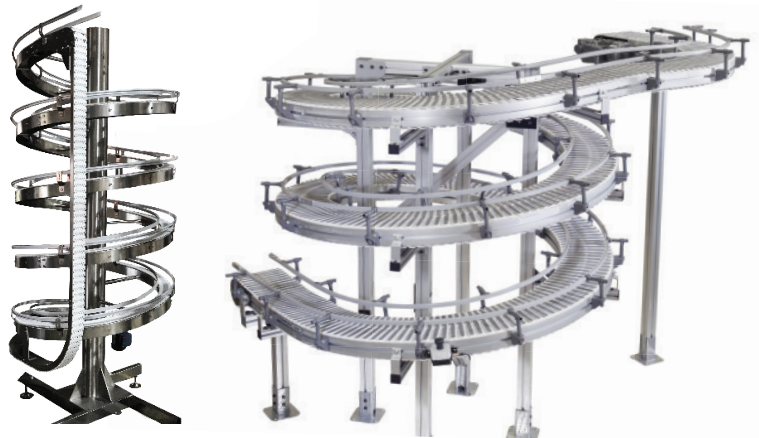




PHOENIX MECANO

## Spiral Conveyors

- > Reduces conveyor footprint saving valuable floor space
- > Allows incline or decline through corners and straights
- > Provides capability for product buffering or storage for accumulation or cooling
- > Provides capability for vertical incline with minimal floor space use
- > Simple, low cost Spiral for small parts handling
- > Available in aluminium and stainless steel

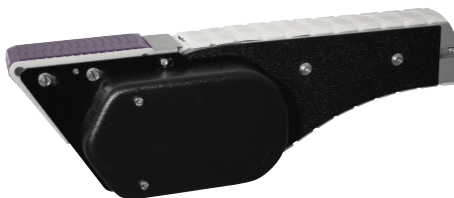


## Top Running Loops & Pallet Systems

- > Continuous conveyor loop
- > Mid drive module driving on single belt tooth (Includes belt hold down rollers)
- > 9 m (30 ft) max total conveyor length
- > Patented top running drive design
- > Also available using wheel corner drive modules

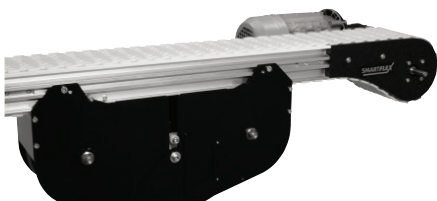


# INDUSTRY LEADING TECHNOLOGY



## Industry Best Product Transfers

Powered transfers allow for smooth end transfers for products as small as 76 mm (3 in) in diameter. They are slave driven off of the conveyor and can be attached to the infeed or exit.



## Weighted Take-up Module

The unique, compact weighted take up is designed to prevent catenary sag and eliminate potential pinch points for safety.



## Helical Curve & Spiral Chain

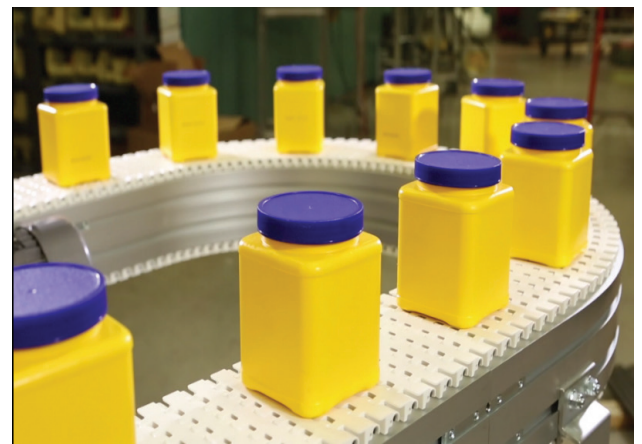
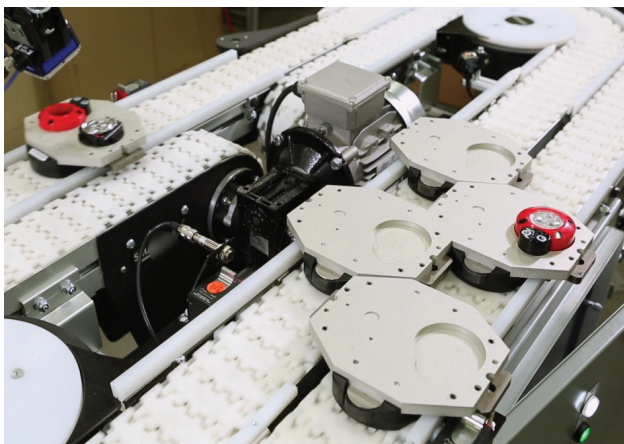
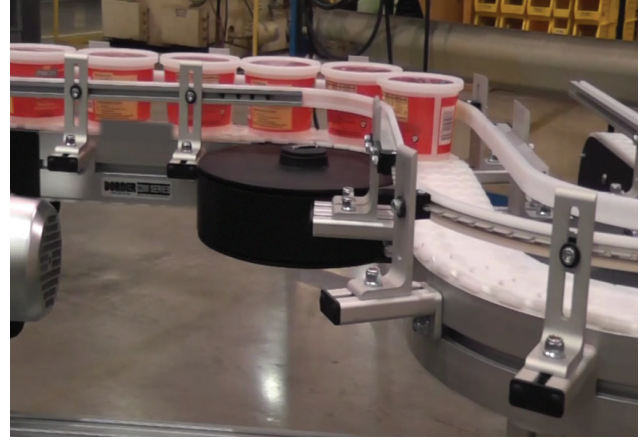
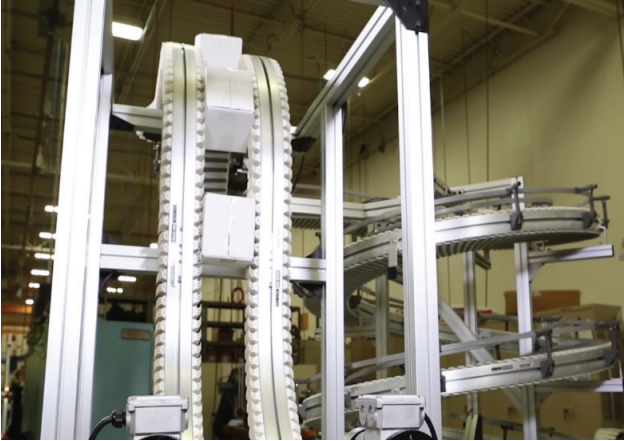
Patented side roller chain reduces corner friction allowing for multiple turns while maintaining loads and speeds.



## Twist Conveyors

Easily rotate packages 90 degrees without product change-over with the flexibility of Twist Conveyors.

# APPLICATIONS





## OTHER PRODUCTS

### Aluminium Profile Technology

- > Structural Profiles
- > Heavy Duty Profiles
- > Functional Profiles

### Linear Technology

- > Linear Units
- > Electrical Cylinders
- > Lifting Columns

### Connecting Technology

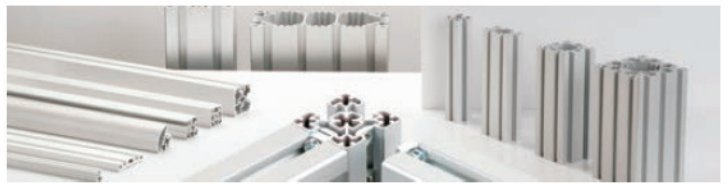
- > Light Clamps
- > Robust Clamps
- > Solid Clamps

### Pipe Racking System

- > Various Roller Tracks
- > Mounting Accessories
- > Dcoated, Aluminium and SS Pipes

### Conveyor Technology

- > Pallet Conveyor Systems, Pallet Lifters
- > Modular Chain Conveyors
- > Belt, Roller Conveyors



## OTHER SOLUTIONS

- > Customized Multi Axis Palletizations, Pick & place Systems
- > Pick to Light Systems
- > AL Profiles / Pipes & Joints Workstations
- > Protection & Partitioning / Fencing Systems
- > Kitting Trolleys/ Pipe Racking Systems



### Head Office and Manufacturing Plant



PHOENIX MECANO INDIA PVT. LTD  
408 Urse, Maval Taluka, Talegaon Urse Road, Pune – 410506



+91 2114 258000



600\_grp\_info@phoenix-mecano.com